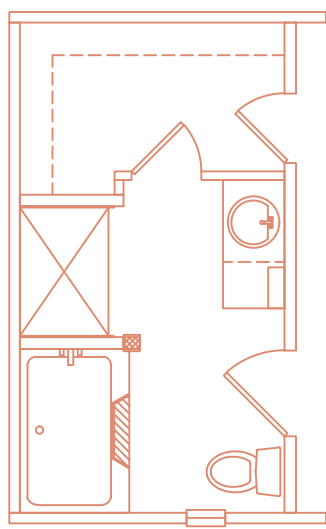


▨ = SUPPORT PIER

- FOUNDATION NOTES:**
1. PIER LOCATIONS INDICATED ARE FOR REFERENCE ONLY. REFER TO INSTALLATION MANUAL FOR ADDITIONAL REQUIRED LOCATIONS SUCH AS FOR OPTIONAL ITEMS LIKE FIREPLACES OR ALTERNATIVE PIER SPACINGS AND ROOF LOADS.
 2. SINGLE STACKED PIERS LESS THAN 36" HIGH.
 3. DOUBLE STACKED PIERS 36" TO 67" HIGH.
 4. UTILITY LOCATIONS ARE "GENERAL" AND IF AN EXACT DIMENSION IS REQUIRED PLEASE VERIFY WITH SPECIFIC HOME SERIAL NUMBER.



Legacy Housing

DATE:	02/10/2016	MODEL:	1680-32Q
SCALE:	NTS	DRAWN BY:	JMS

TITLE: FOUNDATION PLAN			
REF #	DESCRIPTION	DATE	REVISED BY:

DWG #: